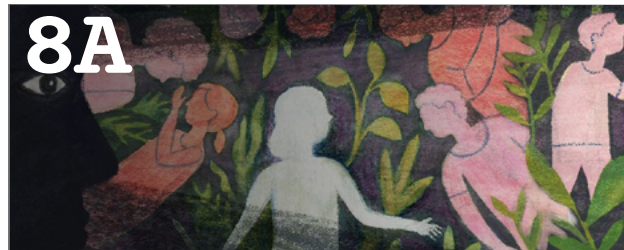


Grade 8

100 Lesson Pathway



Amplify ELA offers 180 days of instruction, but we know that teachers may want to reserve some instructional time for other favorite projects. Here's an abridged version of the curriculum that ensures full standards coverage in only 100 lessons. This pathway includes five reading assessments, two essays, and a mix of informational and literary texts. You can always add on Quests, Poetry in America, Novel Guides, and all your other favorite content.



8A

Perspectives & Narrative

16 Lessons



SUB-UNITS (Lessons)

Get Started (1–4)

Narrative Writing (1–11)

Perspectives & Narrative Reading Assessment

READING Literature	RL.8.1, RL.8.5
READING Informational Text	RI.8.1, RI.8.2, RI.8.3, RI.8.4, RI.8.5, RI.8.6, RI.8.10
WRITING	W.8.1, W.8.2, W.8.2.B, W.8.3, W.8.3.A, W.8.3.B, W.8.3.C, W.8.3.D, W.8.3.E, W.8.4, W.8.5, W.8.9.B, W.8.10
SPEAKING & LISTENING	SL.8.1, SL.8.1.A, SL.8.2
LANGUAGE*	L.8.4.C, L.8.4.D



8B

Liberty & Equality

25 Lessons



SUB-UNITS (Lessons)

Narrative of the Life of Frederick Douglass by Frederick Douglass (1–14)

The Gettysburg Address (1–5)

Write an Essay (1–5)

Liberty & Equality Reading Assessment

READING Informational Text	RI.8.1, RI.8.2, RI.8.3, RI.8.4, RI.8.5, RI.8.6, RI.8.7, RI.8.8, RI.8.9, RI.8.10
WRITING	W.8.1, W.8.1.D, W.8.2, W.8.2.A, W.8.2.B, W.8.2.C, W.8.2.D, W.8.2.E, W.8.2.F, W.8.3, W.8.3.B, W.8.4, W.8.5, W.8.6, W.8.7, W.8.9, W.8.9.B, W.8.10
SPEAKING & LISTENING	SL.8.1, SL.8.1.A, SL.8.1.D, SL.8.2, SL.8.3, SL.8.4
LANGUAGE*	L.8.1, L.8.2.C, L.8.3, L.8.4, L.8.4.A, L.8.4.C, L.8.4.D, L.8.5, L.8.5.B, L.8.5.C, L.8.6



8C

Science & Science Fiction

18 Lessons

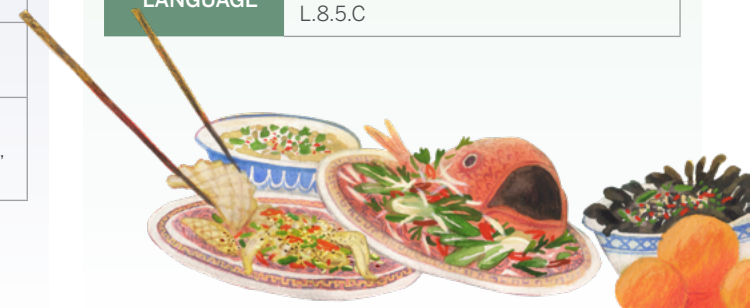


SUB-UNITS (Lessons)

Gris Grimly's Frankenstein by Mary Shelley and Gris Grimly (1–17)

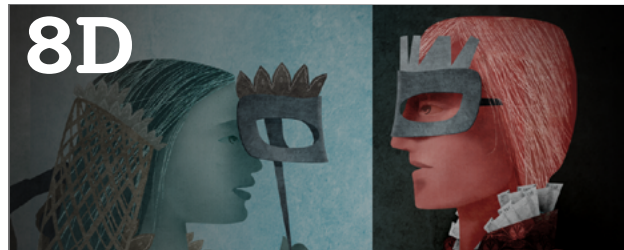
Science & Science Fiction Reading Assessment

READING Literature	RL.8.1, RL.8.2, RL.8.3, RL.8.4, RL.8.5, RL.8.6, RL.8.7, RL.8.9, RL.8.10
WRITING	W.8.1, W.8.3, W.8.3.B, W.8.4, W.8.9.A, W.8.10
SPEAKING & LISTENING	SL.8.1, SL.8.1.A, SL.8.1.B, SL.8.1.D, SL.8.3, SL.8.4, SL.8.6
LANGUAGE*	L.8.1, L.8.3, L.8.4.A, L.8.4.C, L.8.4.D, L.8.5.C



Grade 8

100 Lesson Pathway



8D

Shakespeare's Romeo & Juliet

17 Lessons



SUB-UNITS (Lessons)

Romeo and Juliet by William Shakespeare (1–16)

Shakespeare's Romeo & Juliet Reading Assessment

READING Literature	RL.8.1, RL.8.2, RL.8.3, RL.8.4, RL.8.5, RL.8.6, RL.8.7, RL.8.10
WRITING	W.8.1, W.8.1.B, W.8.2, W.8.2.B, W.8.2.D, W.8.9, W.8.9.A, W.8.10
SPEAKING & LISTENING	SL.8.1, SL.8.1.A, SL.8.1.C, SL.8.2, SL.8.4, SL.8.6
LANGUAGE*	L.8.3, L.8.4, L.8.4.A, L.8.4.C, L.8.4.D, L.8.5, L.8.5.A, L.8.5.C, L.8.6



8F

The Space Race Collection

24 Lessons



SUB-UNITS (Lessons)

Information Literacy (1–4)

Scavenger Hunt and Internet Research (1–4)

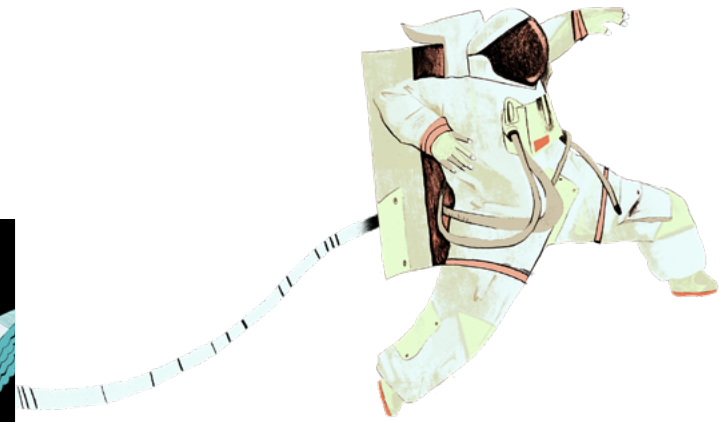
Space Blogs and Collection Research (1–4)

Socratic Seminar and Internet Research (1–3)

Write an Essay† (1–8)

The Space Race Collection Reading Assessment

READING Informational Text	RI.8.1, RI.8.3, RI.8.7, RI.8.10
WRITING	W.8.1, W.8.1.A, W.8.1.B, W.8.1.C, W.8.1.D, W.8.1.E, W.8.2, W.8.3, W.8.3.A, W.8.4, W.8.5, W.8.6, W.8.7, W.8.8, W.8.9, W.8.10
SPEAKING & LISTENING	SL.8.1, SL.8.1.A, SL.8.1.B, SL.8.1.C, SL.8.1.D, SL.8.2, SL.8.3, SL.8.4, SL.8.5, SL.8.6
LANGUAGE*	L.8.1, L.8.2.C, L.8.3, L.8.4, L.8.4.C, L.8.4.D



* To ensure full coverage of the Language standards, we recommend using part of each Flex Day to work on grammar instruction. This recommended sequence includes 12 Flex Days in which to cover 7 grammar standards: L.8.1.A, L.8.1.B, L.8.1.C, L.8.1.D, L.8.2, L.8.2.A, and L.8.2.B. See the Grammar Pacing Guide for more information.

† This essay provides a choice of two prompts. To ensure full standards coverage, assign the argumentative prompt.